

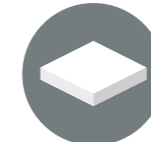


EasyCut series

The tough performer

Oxyfuel

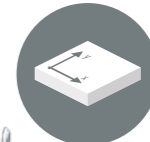
Plasma



Plates



Pipes & profiles



2D cutting



Marking

EasyCut is a robust and precise CNC cutting machine designed for multiple-shift heavy-duty oxyfuel and plasma cutting. It's sturdy construction allows to perform simultaneous cuts with up to 6 cutting tools. Long-term stability and accuracy of the system is ensured by it's dual-side driven gantry, planetary gearboxes and helical racks and pinions. Apart from single oxyfuel torches for cutting of steel up to 300 mm thick, the machine can accommodate also highdefinition plasma technology.



Multi-tool cutting with up to 6 oxyfuel torches



- Increase your productivity with parallel cutting operations
- Automatic spacing of slave tool stations (option)
- Individual selection of tools parameters to fit your requirements
- All tools controlled automatically from the iMSNC® control system

Processing of material thicknesses up to 300 mm



EasyCut machines are designed to withstand high workloads in multiple-shift operations including multi-torch parallel oxyfuel cutting of material thicknesses up to 300 mm. Intelligent temperature management keeps the system from exceeding its limits even in harsh environmental conditions and under intensive cutting load.

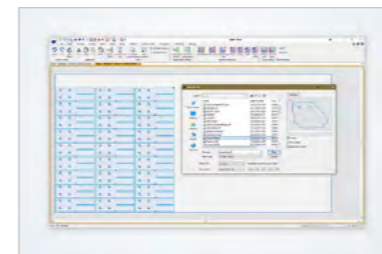
Robust and durable



Extreme conditions present a great challenge to any cutting machine. With EasyCut, MicroStep has come up with a solution that is suitable also for non-standard environments.

- Operating temperatures: -10 °C to +45 °C
- Resistance to dirt, dust and humidity
- Robust machine design for longevity even in heavy-duty cutting operations

Innovative software solutions



So that you can fully concentrate on your production, our innovative software solutions help you intuitively transform drawings and cutting plans into inished parts.

The iMSNC® control system



A standalone, ergonomic MMI console provides the operator with an overview of all cutting processes, machine related information as well as extensive multi-tasking features. Additionally, a handy operational panel on the gantry allows the operator to perform basic tasks such as interrupt a cutting program, initialize or move the machine or perform a manual cut.

